

Product vision

Tom Timms, Sales Director - July 2017



SERVE | ADD VALUE | INNOVATE



Presentation outline

- Where are we now ?
 - UKMap
 - UKBuildings
 - UKLand
 - UKSurvey
- Where would we like to get to ?
- The roadmap
- Next releases ...



Product range

UKMap[®]



UKBuildings[®]



UKLand[®]



UKSurvey[®]

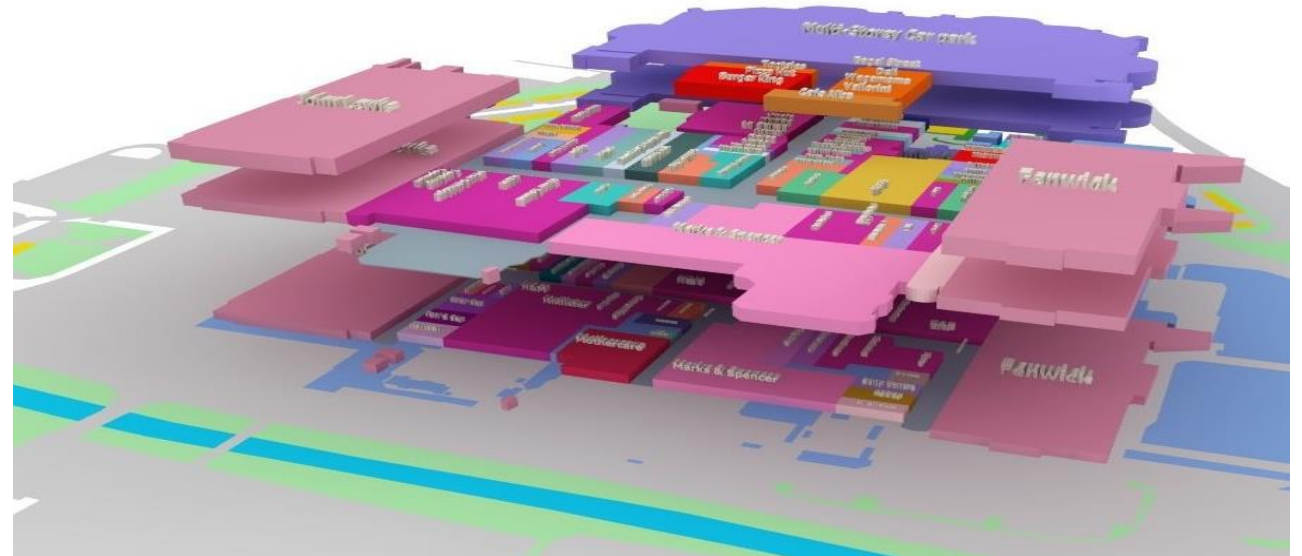
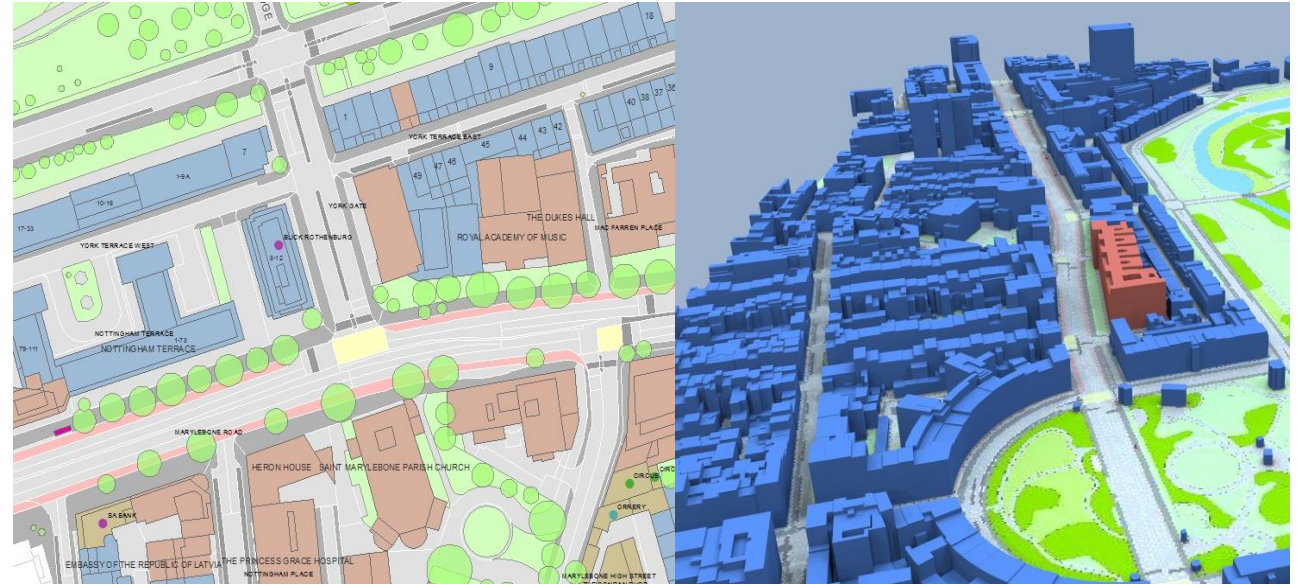




UKMap

Unique detailed mapping database of

- Topography
- Building heights
- Land-use & Land cover
- Points of interest
- Addresses
- Transport information
-

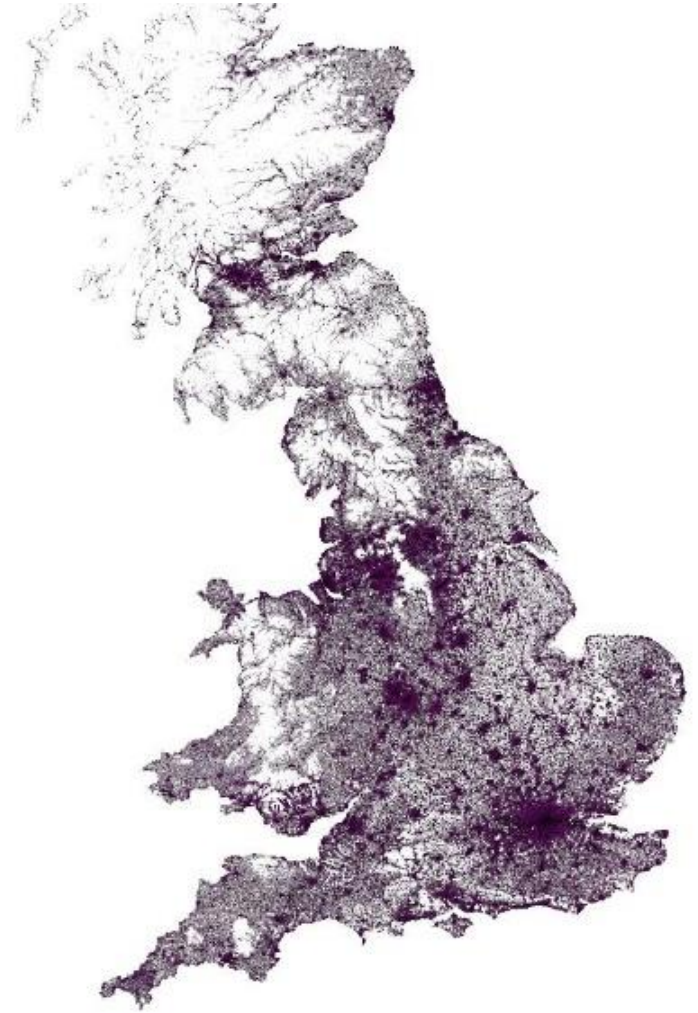




UKBuildings

Unique observed database of Buildings

- Building footprint (and area)
- Building height
- Residential / Non-residential flag
- Building Age
- Building Type, including use for non residential
- Basement flag
-

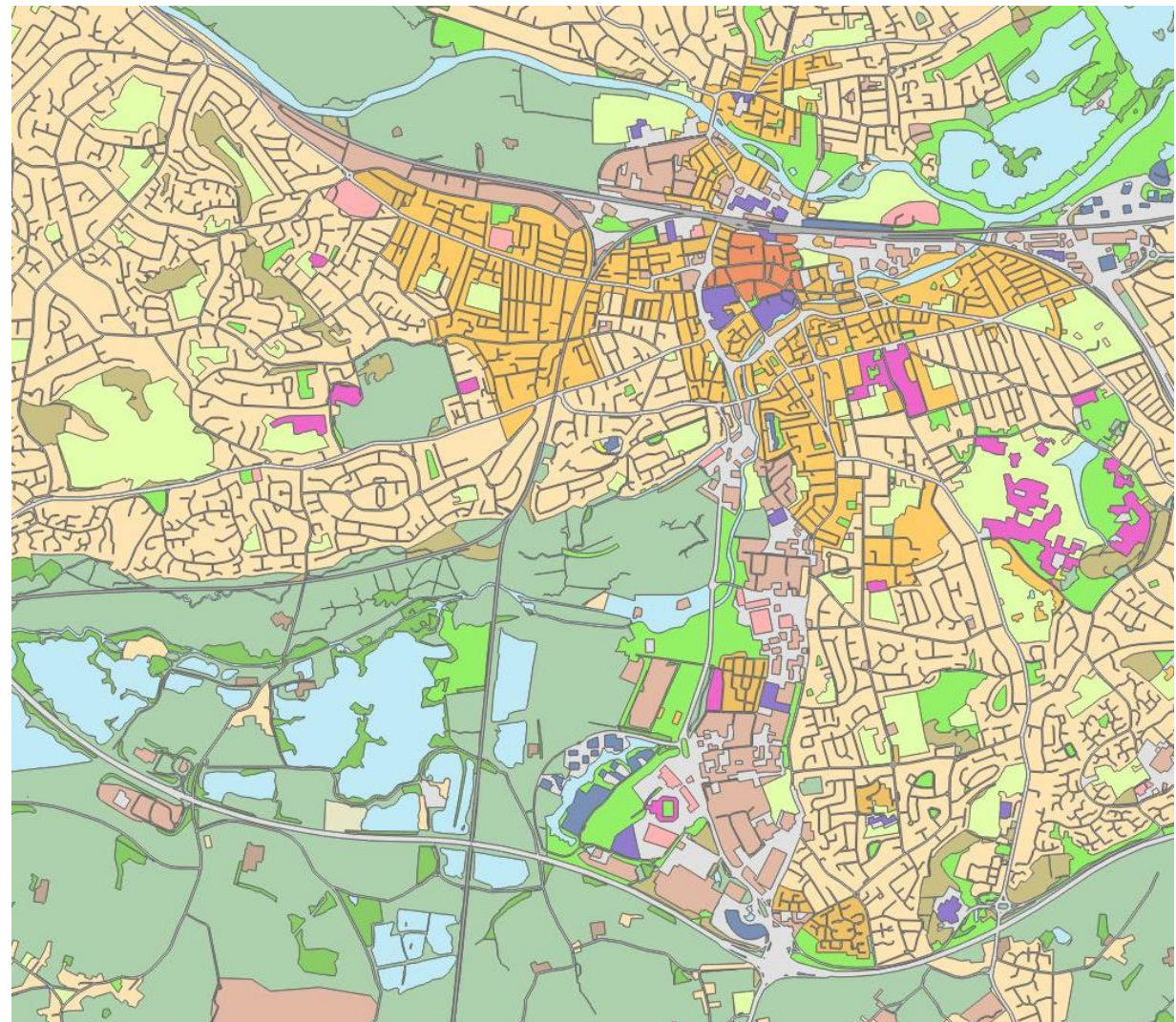




UKLand

Land-use database

- National coverage
- 30 classes
- Natural
 - Natural
 - Woodland
 - Agriculture ...
- Man-made
 - Urban centres
 - Business parks ...





Example 1:20,000





Example 1:2000





The vision

- A single common, maintained national database
 - Detailed building data
 - UKMap level of detail in urban areas
 - Consistent and detailed Land-use
- Managing real-world entities
- Linked to published national datasets



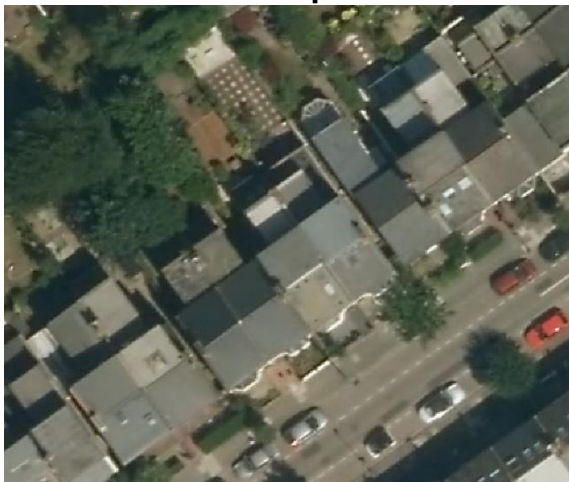
The roadmap principles

- Managing real world objects
 - Sites
 - Properties
 - Buildings
 - Elements
- Improved classifications (eg: Basements ...)
- Improved handling of 3rd dimension
- Improved dataset integration

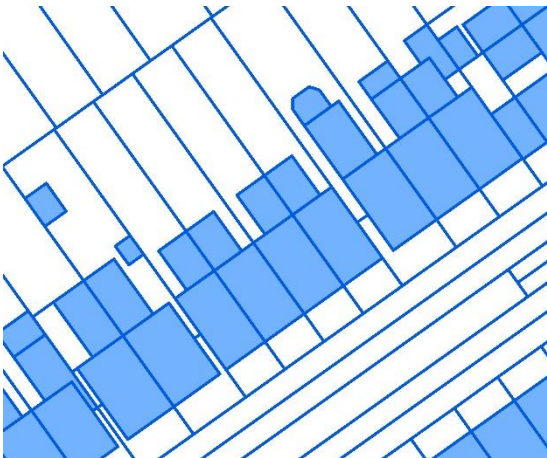


Residential example

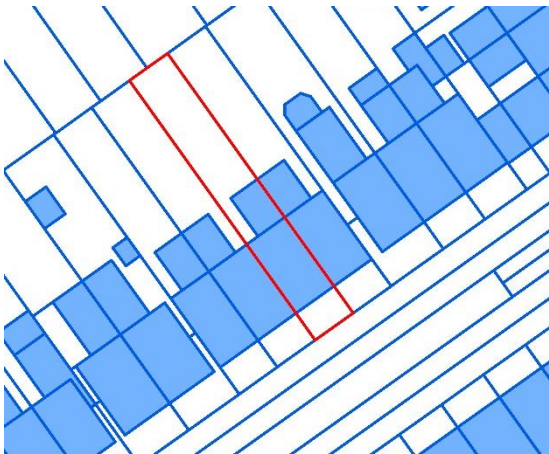
Aerial



Map



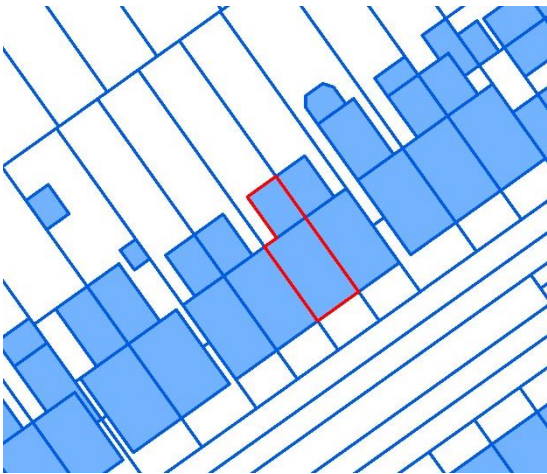
Site



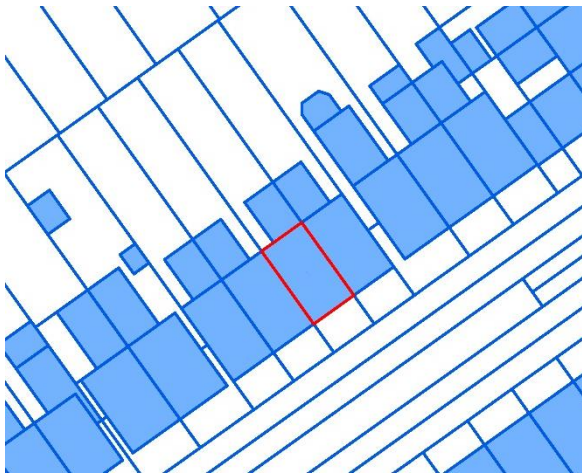
Building



Property



Element



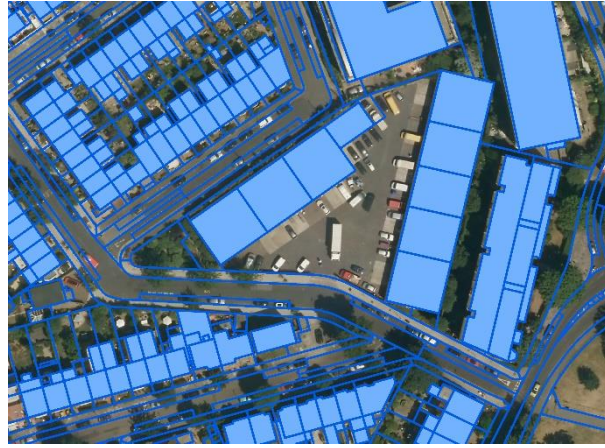


Commercial example

Aerial



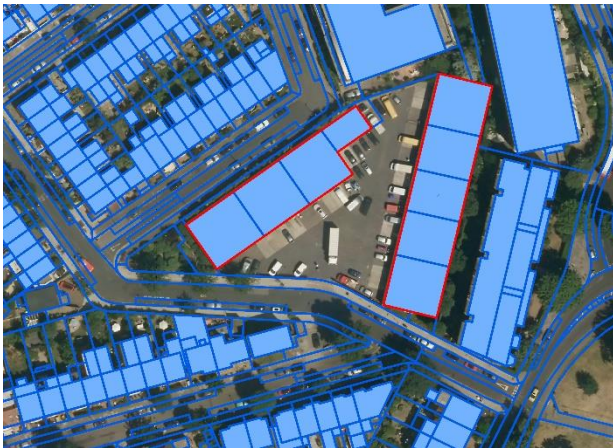
Map



Site



Building



Property



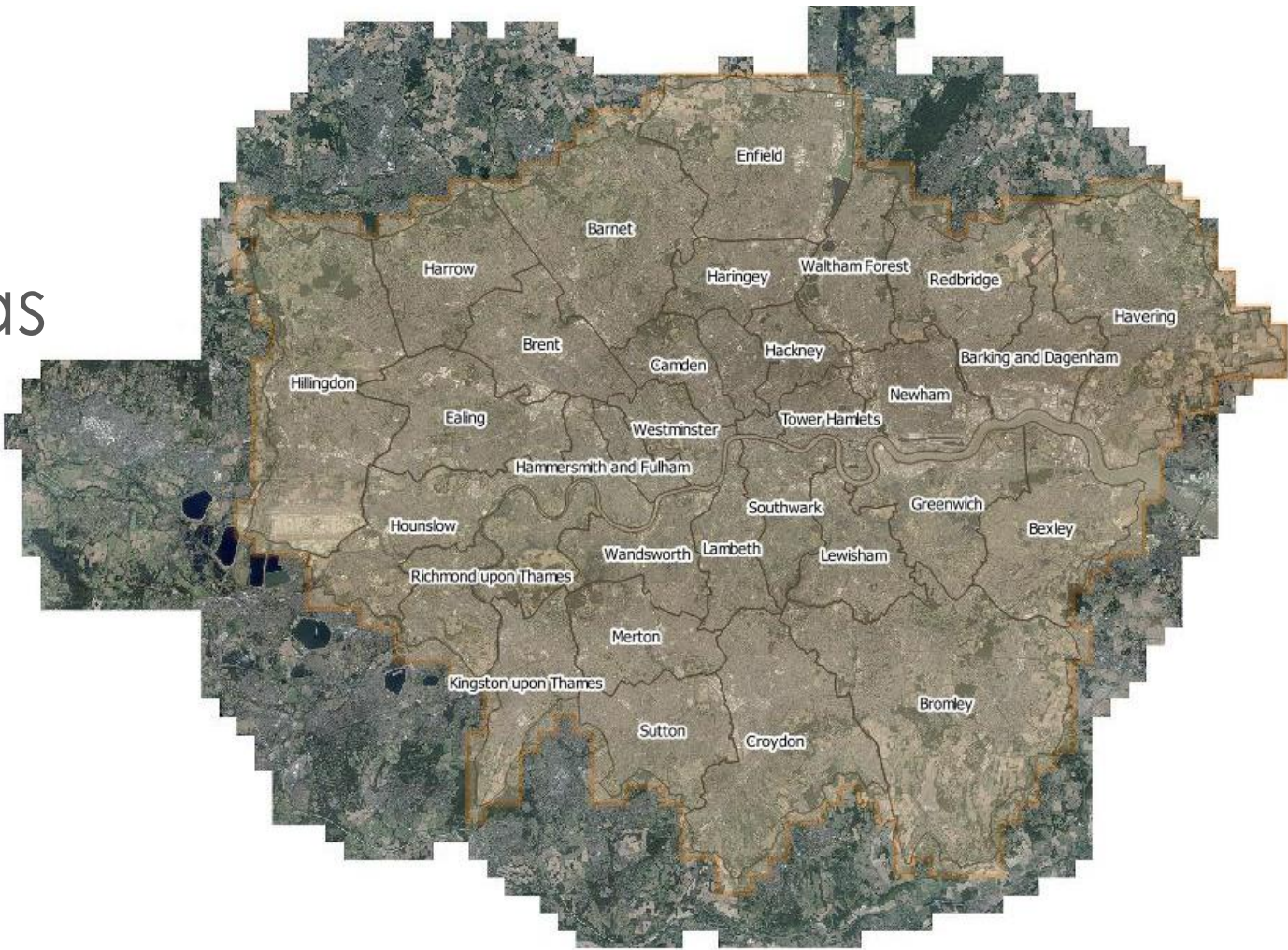
Element

No
Distinctive
Elements
within either
building



UKMap – extended coverage

- London 2016
- Planned new aerial surveys in urban areas





UKMap – enhanced specification

- Edition 3 specification
- Improved 3D management
 - Levels
 - Storeys
- Tested in complex 3D environment



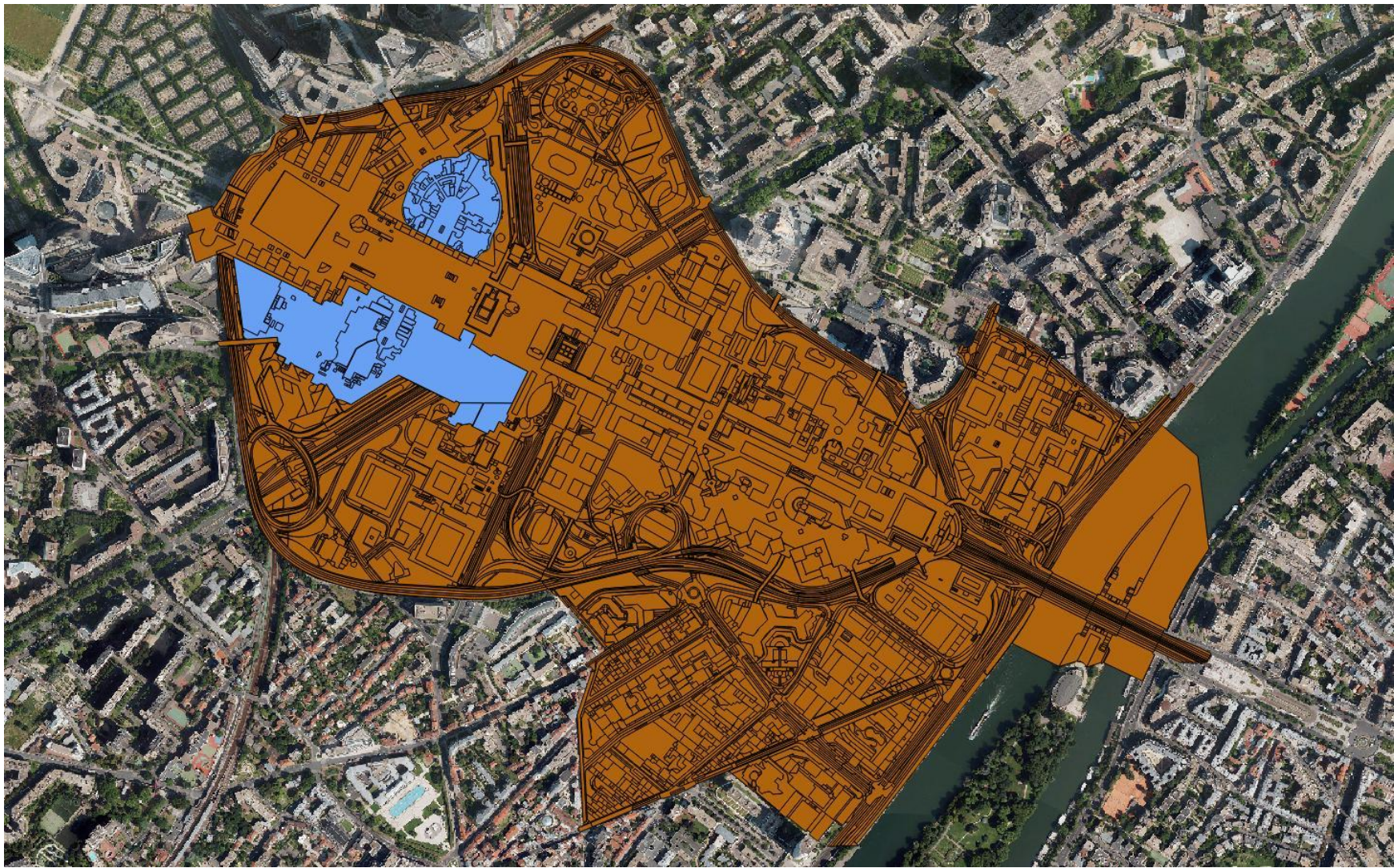
La Défense, Paris





Base layer plus overlay levels

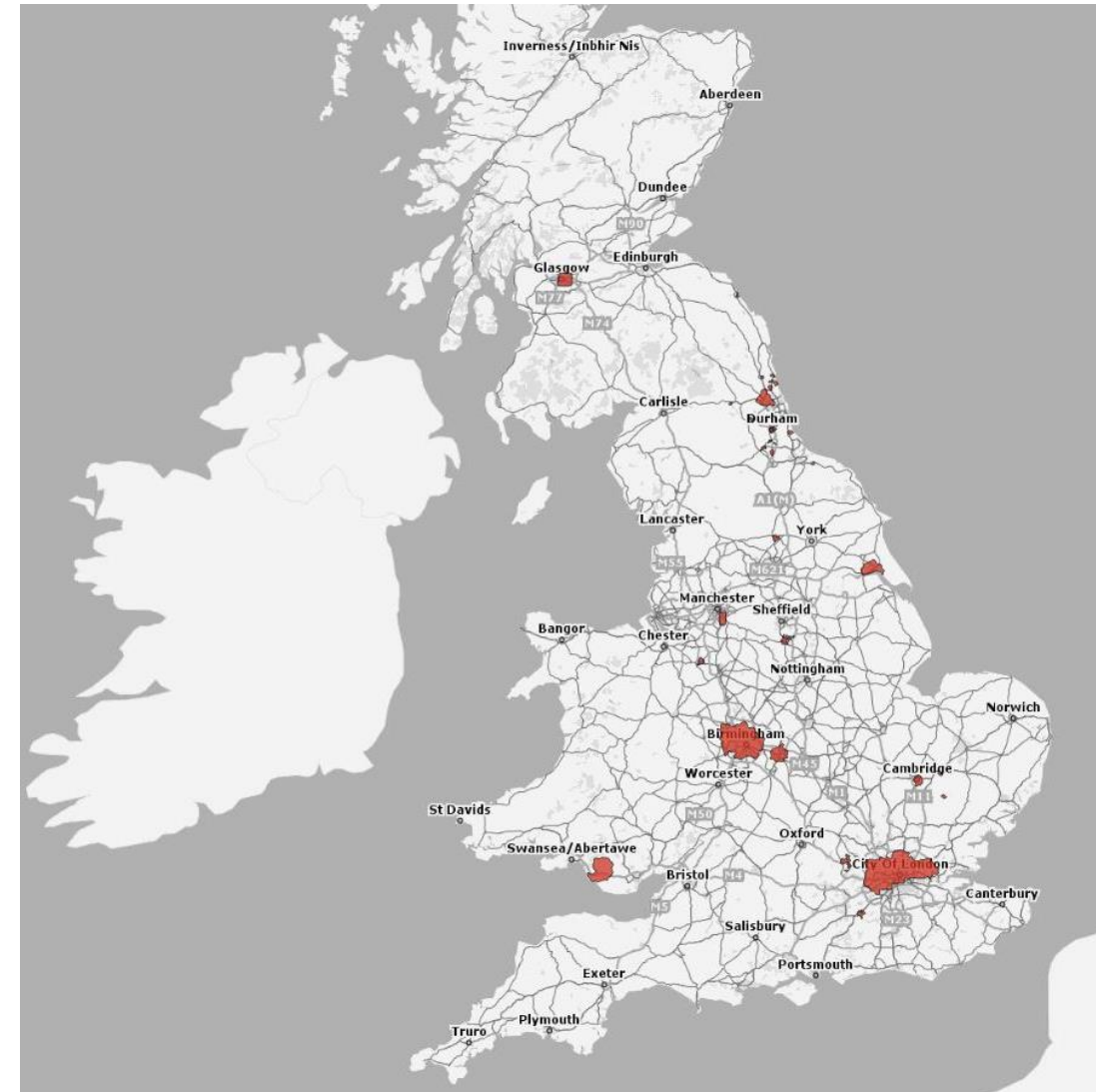
Base +
Level 0





UKBuildings coverage

- Complete urban coverage, residential & non-residential by end 2018
- Residential reviewed
- Modelled rural data with program for data capture post 2018

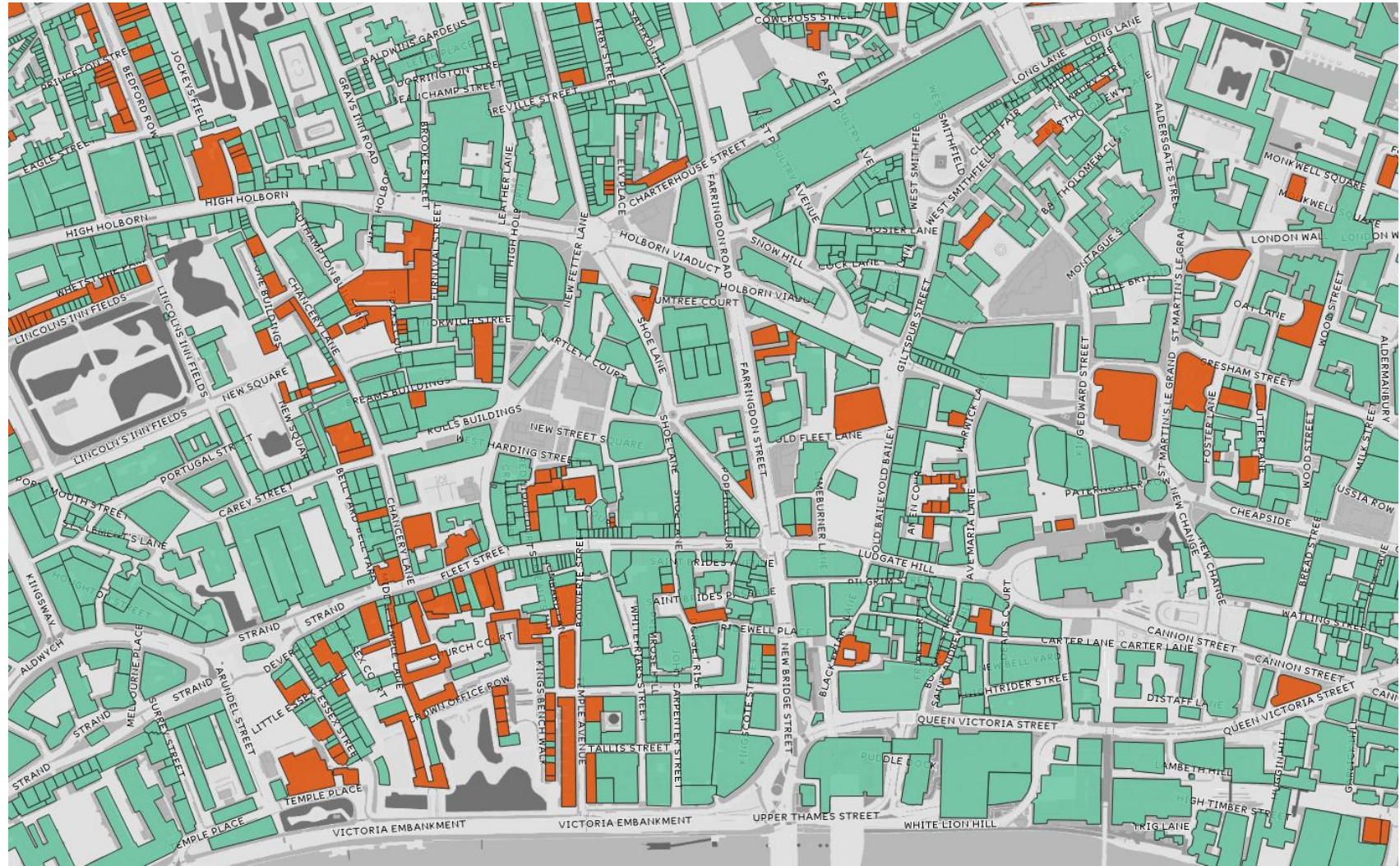




UKBuildings - classification

- Enhanced classifications

- Eg: Basements
- Heights / Floors
- Tower blocks
- Age categories standardised





UKLand

- Revised specification available in 2018
- Multi-layered dataset
- Maintained in line with UKBuildings
- Prototype demonstrated in workshop



September releases

- UKMap – Edition 19
 - No specification changes
 - Maintenance update with 2016 imagery
 - Potentially BLPUs
- UKBuildings
 - No specification changes
 - Review of tower blocks
 - Significant additional non-residential coverage approx. 1200km²

Thank-you

